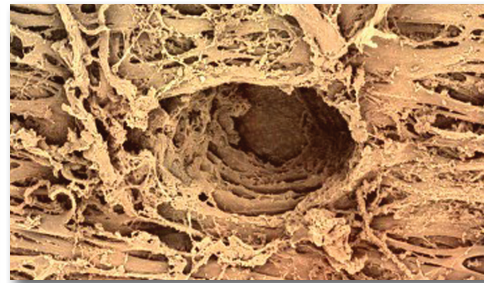
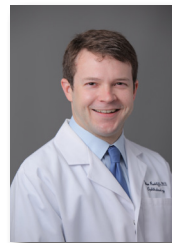


MicroPulse® Laser Trabeculoplasty (MLT)



“MLT is both safe and durable. This therapy can be considered a first-line treatment for glaucoma patients, as well as patients who haven’t seen significant effects from medications.”

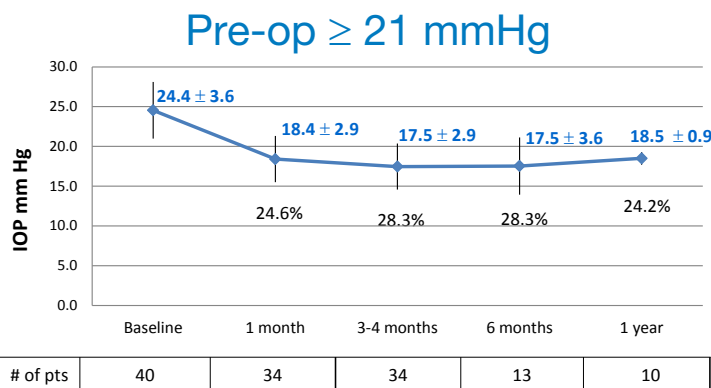
Iqbal (Ike) Ahmed, MD, FRCSC
University of Toronto



“MLT is versatile in a variety of ways: for patients just starting therapy, replacing an eye drop, as an adjunct to an eye drop or to keep them away from incisional surgery.”

Nathan Radcliffe, MD
New York Eye Surgery Center

Long-Term Multi-Center Data using 1000 mW



One Year IOP Results

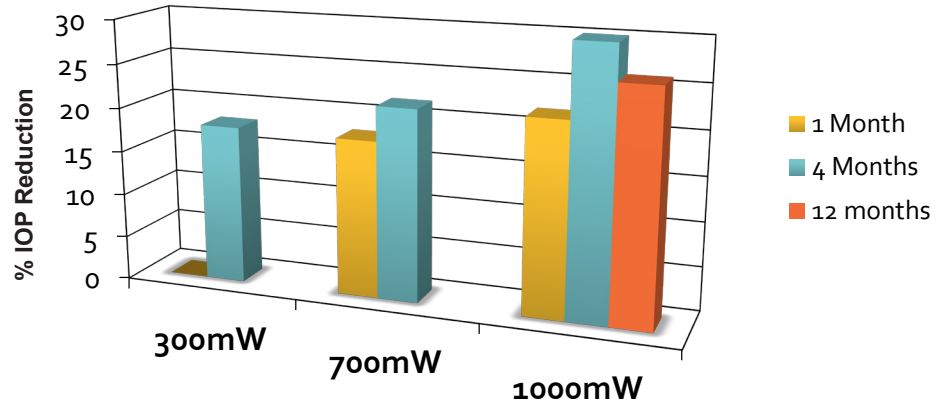
The 1 year results show approximately 6 mm Hg drop in IOP equating to a 25% reduction.

Iqbal (Ike) Ahmed, MD, FRCSC, University of Toronto, Canada | David Gossage, DO, FAOCO, FAAO, Gossage Eye Institute, Hillsdale, MI
Nathan Radcliffe, MD, New York Eye Surgery Center, New York, NY | Steven Vold, MD, Vold Vision LLC, Fayetteville, AR

¹ Fudemberg SJ, Myers JS, Katz LJ: Trabecular Meshwork Tissue Examination with Scanning Electron Microscopy: A Comparison of Micropulse Diode Laser (MLT), Selective Laser (SLT), and Argon Laser (ALT) Trabeculoplasty in Human Cadaver Tissue. Invest. Ophthalmol. Vis. Sci. 2008;49(5):ARVO E-Abstract 1236.

Evidence of Dose Response

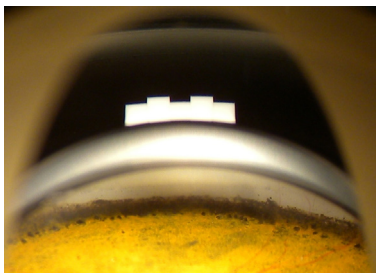
The data shows the greatest IOP reduction was experienced by performing MLT at 1000 mW.



David Gossage, DO, FAOCO, FAAO, Gossage Eye Institute, Hillsdale, MI

MLT Lens

- Rotatable indexing ring allows for confluent laser treatment without removing the MLT lens from the eye
- Tactile positions of the indexing ring are aligned to clock hours, thus facilitating memory of approximate location of previous subthreshold laser spots in the case the patient blinks
- Visible white reference guide assists placement of 10 confluent laser treatments per clock hour



Specifications are subject to change without notice. IRIDEX, IRIDEX logo and MicroPulse are registered trademarks and TxCell and IQ 532 are trademarks of IRIDEX Corporation. All other trademarks are the property of their respective owners.

Products are covered by one or more of the following U.S. patents: 5,511,085; 5,982,789; 6,327,291; 6,540,391; 6,733,490; 7,766,904; 7,771,417; 7,909,816; 5,997,498; 6,073,759; 6,092,898; 6,217,594; 6,494,314; 6,585,679; 6,726,666; 6,800,076; 6,866,142; 7,537,593; 8,177,777; 783783; 69530497.6; KR 348012; 0904615; 69706541.3; CA 2331837; AU 759193; JP 4149670; EP 1009684; CA 2286002; JP 449444; JP 4570696; JP 4819754; JP 5123973; JP 5133069.

Other U.S. and international patents pending.



Emergo Europe

Molenstraat 15, 2513 BH, The Hague, The Netherlands, Tel.: (31) (0) 70 345-8570, Fax: (31) (0) 70 346-7299

