



# IRIDEX<sup>®</sup> Vitreoretinal Instrumentation



**IRIDEX**

Elegantly simple solutions<sup>™</sup>

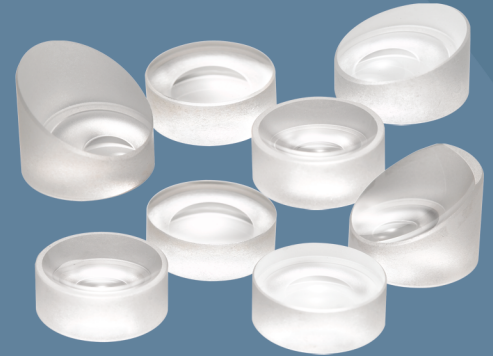
# Endoview™ Sapphire Surgical Contact Lenses

Manufactured from a single-crystal sapphire, the Endoview Sapphire Lenses offers the clarity and superior visualization over standard quartz lenses.

## Durability with Superior Performance

- Scratch and chip proof
- High refractive index for wide field viewing
- Increased visualization during fluid gas exchange
- Reusable
- Wide array of lens models available

\*Endoview lenses are available for U.S. sales only.



# MoistAir™ In-Line Air Humidifier

Enhance surgical performance by reducing dehydrating effects of dry air in the posterior chamber with the MoistAir humidifier<sup>1,2</sup>.

## Peer reviewed studies have shown humidified air can...

- Delay crystalline lens feathering<sup>3</sup>
- May prevent visual field defects after macular hole surgery<sup>3,4</sup>
- Protect the corneal endothelium<sup>5,6</sup>

The MoistAir chamber inserts into any standard tubing and is self-priming when placed between the stop cock and infusion cannula.



1. Eter N, Brinken R, Garbe S, Spitznas M. Intraocular humidity immediately after fluid-air exchange in pars plana vitrectomy. *Graefes Arch Clin Exp Ophthalmol* 2006;244(3):305-8.
2. Vote BJ, Russell MK, Newland A, Polkinghorne PJ. The evaluation of a humidifying device for vitreoretinal surgery. *Br J Ophthalmol* 2004;88(12):1582-4.
3. Harlan JB, Jr., Lee ET, Jensen PS, de Juan E, Jr. Effect of humidity on posterior lens opacification during fluid-air exchange. *Arch Ophthalmol* 1999;117(6):802-4.
3. Welch JC. Dehydration injury as a possible cause of visual field defect after pars plana vitrectomy for macular hole. *Am J Ophthalmol* 1997;124(5):698-9.
4. Ohji M, Nao IN, Saito Y, Hayashi A, Tano Y. Prevention of visual field defect after macular hole surgery by passing air used for fluid-air exchange through water. *Am J Ophthalmol* 1999;127(1):62-6.
5. Cekic O, Ohji M, Zheng Y, Hayashi A, Kusaka S, Tano Y. Experimental study of viscoelastic in the prevention of corneal endothelial desiccation injury from vitreal fluid-air exchange. *Am J Ophthalmol* 2003;135(5):641-7.
6. Cekic O, Ohji M, Hayashi A, Fang XY, Kusaka S, Tano Y. Effects of humidified and dry air on corneal endothelial cells during vitreal fluid-air exchange. *Am J Ophthalmol* 2002;134(1):75-80.



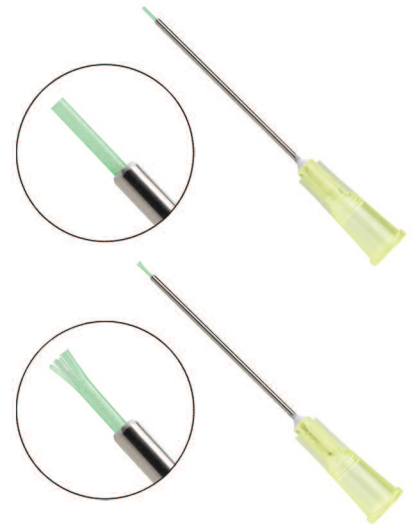
# GreenTip™ Soft Tip Cannula

Effectively visualize and assess the proximity of the retina with the “fluorescing” GreenTip cannula. Unlike transparent silicone-tipped needles, the GreenTip is designed to provide optimal contrast against the red-orange background of the retina.

## Gain More Control with Better Visualization

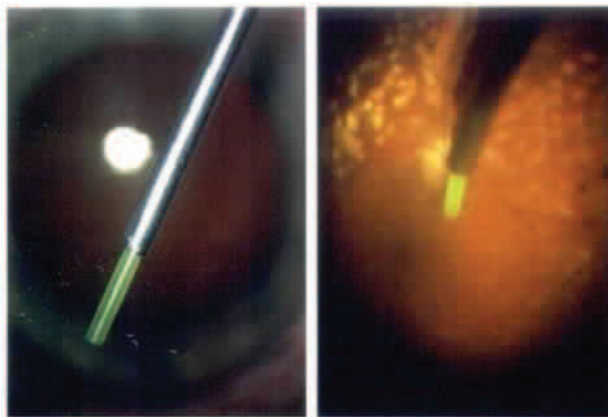
- Fluorescent GreenTip maximizes visualization
- Atraumatic silicone tip protects the retina during aspiration and subretinal fluid drainage
- Standard Tip design maximizes flow
- Brush Tip design protects the tissue by directing partial flow along the side of the tip
- **New** 0.5 mm standard tip allows for easy insertion and improved fit in valve cannulas

\*GreenTip cannulas are available for U.S. sales only.



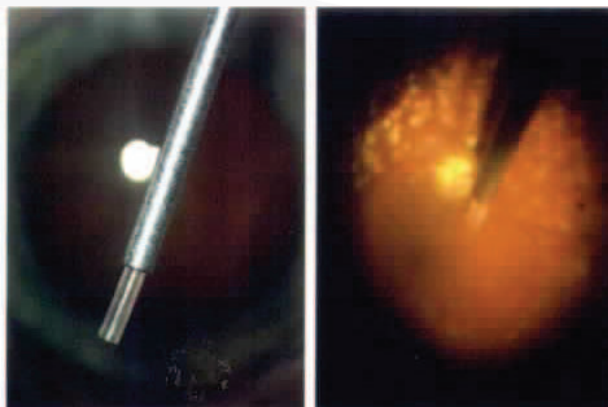
### With GreenTip

The GreenTip cannula fluoresces in high contrast with the retina for improved visualization.



### Without GreenTip

The transparent silicone tip blends with the retina, reducing visualization.





# IRIDEX® Vitreoretinal Instrumentation

## Product Numbers

### GreenTip™ Soft Tip Cannula (Box of 12)

20 Gauge - Standard Tip 0.5 mm	100-31
20 Gauge - Standard Tip 1.0 mm	100-40
20 Gauge - Standard Tip 2.5 mm	100-49
20 Gauge - Brush Tip 2.5 mm	100-48
23 Gauge - Standard Tip 0.5 mm	100-32
23 Gauge - Standard Tip 1.0 mm	100-41
23 Gauge - Standard Tip 2.5 mm	100-23
23 Gauge - Brush Tip 2.5 mm	100-46
25 Gauge - Standard Tip 0.5 mm	100-33
25 Gauge - Standard Tip 1.0 mm	100-42
25 Gauge - Standard Tip 2.5 mm	100-25
25 Gauge - Brush Tip 2.5 mm	100-47

### MoistAir™ In-Line Humidifier (Box of 10)

MoistAir Humidifying Chamber	200-10
------------------------------	--------

### Endoview™ Sapphire Surgical Contact Lenses



Flat Sapphire Lens (-49D, wide field)	700-04
15° Prism Sapphire Lens (-49D)	700-05
30° Prism Sapphire Lens (-49D)	700-06
Biconcave Sapphire Lens (-151D)	700-07
Asymmetric Biconcave Sapphire Lens (-131D/-140D)	700-08
30° Prismatic Biconcave Lens (-117D)	700-09
Magnifying Lens (-11D)	700-13
Macular Lens (-20D)	700-14

### Endoview Lens Accessories

Sterilization Container	700-10
Lens Ring	700-11

### Endoview Sapphire Lens Sets

Basic Lens Set (Contains 4 lenses: flat, 15°, 30°, and biconcave lens). Also includes Sterilization Container and Lens Ring.	700-00
Deluxe Lens Set (Contains 6 lenses: flat, 15°, 30°, biconcave, asymmetric biconcave, and 30° prismatic biconcave lens). Also includes Sterilization Container and Lens Ring.	700-02
Expanded Deluxe Lens Set (Contains 7 lenses: flat, 15°, 30°, biconcave, asymmetric biconcave, 30° prismatic biconcave, and magnifying lens). Also includes Sterilization Container and Lens Ring.	700-03
Complete Lens Set (Contains 8 lenses: flat, 15°, 30°, biconcave, asymmetric biconcave, 30° prismatic biconcave, magnifying, and macular lens). Also includes Sterilization Container and Lens Ring.	700-15



# IRIDEX

Elegantly simple solutions™

Specifications are subject to change without notice. IRIDEX and the IRIDEX logo are registered trademarks and MoistAir, Endoview and GreenTip are trademarks of IRIDEX Corporation. All other trademarks are the property of their respective owners.

Products are covered by one or more of the following U.S. and international patents: 7,537,593; 7,909,816; 6,800,076; 6,726,666; 5,997,498; 6,092,898; CA 2,331,837; AU 759,193; EP 1,082,060; and JP 4,149,670. Other U.S. and international patents pending.



Emergo Europe, Molenstraat 15, 2513 BH The Hague, The Netherlands  
Tel.: (31) (0) 70 345-8570, Fax: (31) (0) 70 346-7299