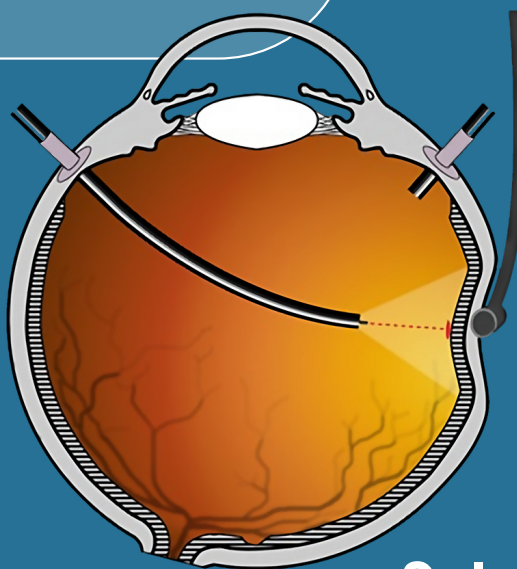


PUT THE SPOTLIGHT ON YOUR LASER TECHNIQUE

LASER PROBES

ILLUMINATED & NON-ILLUMINATED



Solo-Control™

SELF-SCLERAL DEPRESSION WITH ILLUMINATING LASER PROBE

- All gauges: 20ga. 23ga. 25ga.
- Efficacious and Cost Effective
- Multifunctional Instruments
- Manufactured in the U.S.A.



Peregrine Surgical Ltd.
51 Britain Drive
New Britain, PA 18901

For sales inquiries, please contact:



IRIDEX

IRIDEX Corporation
1212 Terra Bella Avenue
Mountain View, CA 94043
800-388-4747
info@iridex.com

PEREGRINE SURGICAL

Ophthalmic and Vitreoretinal Surgical Instruments



*Staying Focused on
Quality and Innovation*



Peregrine Surgical Ltd.
51 Britain Drive
New Britain, PA 18901

For sales inquiries, please contact:



IRIDEX Corporation
1212 Terra Bella Avenue
Mountain View, CA 94043
800-388-4747
info@iridex.com

Membrane Scrapers

(Sapphire Ocular Scraper)

Regular Flex

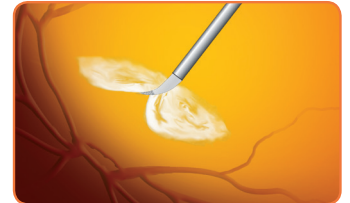
| Description (Box/5) | 20ga. | 23ga. | 25ga. |
|---------------------|----------|----------|----------|
| Retractable Tip | PD800.00 | - | - |
| Standard Tip | PD800.20 | PD800.23 | PD800.25 |

Super Flex

| Description (Box/5) | 20ga. | 23ga. | 25ga. |
|---------------------|-------|------------|------------|
| Standard Tip | - | PD800.23SF | PD800.25SF |



Regular Flex Membrane Scraper



Sapphire Ocular Scraper

Dugel Entry Plate

| | Cat. No. |
|------------------------|-----------|
| Dugel Entry Plate/each | PD490. 23 |

Developed by Pravin Dugel M.D. for constant wound closure

- Displace Conjunctiva
- Cannula Entry Guide
- Fixate Globe
- Fixate Cannula
- 4mm marker



Bottom View



Top View

Specialty Cannulas

Flexible Retina Cannula

| Description (Box/5) | 20ga. | 23ga. | 25ga. |
|----------------------------|----------|----------|----------|
| TPA (Tiny Port Applicator) | PD220.41 | PD223.41 | PD225.41 |

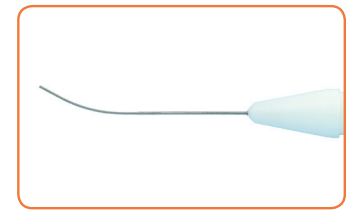
Soft Tip Cannula

| Description (Box/10) | 20ga. | 23ga. | 25ga. |
|----------------------|----------|----------|----------|
| 2mm | PD220.00 | PD223.00 | PD225.00 |

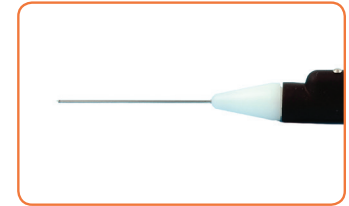
Laser Probes

Alcon* Laser Compatible

| Description (Box/5) | 20ga. | 23ga. | 25ga. |
|----------------------|------------|-------------------------|-----------|
| Straight | PD720.10 | PD723.10 | PD725.10 |
| Curved | PD720.20 | PD723.20S | PD725.20S |
| Illuminated Straight | PD720.30A | PD723.30A | PD725.30A |
| Illuminated Curved | PD720.35A | PD723.35A PD723.35PF | PD725.35A |
| Aspirating Hard Tip | PD720.60HT | PD723.60HT | - |
| Aspirating Soft Tip | PD720.60 | PD723.60 | - |



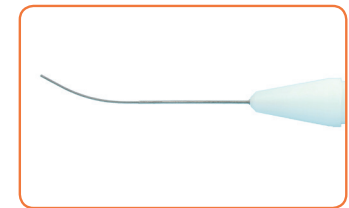
Curved Laser Probe 25ga.



Aspirating Laser Probe

IRIDEX* Laser Compatible

| Description (Box/5) | 20ga. | 23ga. | 25ga. | 27ga. |
|----------------------|----------------|-------------------------|-----------------|----------|
| Straight | PD720.12 | PD723.12 | PD725.12 | PD727.12 |
| Curved | PD720.22 | PD723.22S | PD725.22S | PD727.22 |
| Illuminated Straight | PD720.32A | PD723.32A | PD725.32A | - |
| Illuminated Curved | PD720.37A - | PD723.37A PD723.37PF | PD725.37SA - | - - |
| Aspirating Hard Tip | PD720.62HT | PD723.62HT | - | - |
| Aspirating Soft Tip | PD720.62 | PD723.62 | - | - |



Curved Illuminated Laser Probe 25ga.

*Alcon and IRIDEX registered trademarks

Illuminated Products

Light Probes

| Description (Box/5) | 20ga. | 23ga. | 25ga. |
|---------------------------|-----------|-----------|-----------|
| Light Probe | PD100.00D | PD100.23D | PD125.25D |
| Light Pick (Straight) | PD100.03D | PD123.03D | - |
| Wide Angle Light Diffusor | PD100.09 | - | - |
| Side Irrigating | PD100.01D | - | - |
| End Irrigating | PD100.02D | - | - |



Illuminated Picks

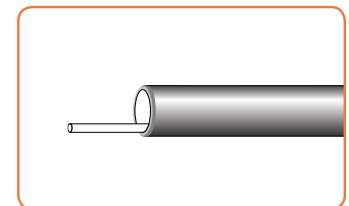
Accessories

Cat. No.

| | |
|---------------------------------------|----------|
| Alcon/Grieshaber Light Source Adapter | PD125.05 |
| B&L Light Source Adaptor | PD125.15 |

Illuminated Bipolar Cautery

| Description (Box/5) | 20ga. | 23ga. | 25ga. |
|---------------------|-------|----------|-------|
| Straight | - | PD123.13 | - |



Cautery with Light